

WECC2015 Scales Up Content

Dr. Ayao Tsuge, Chair of the WECC2015 Organizing Committee and President of the Japan Federation of Engineering Societies, announced a new program for WECC2015 at the WFEO general assembly which was held in conjunction with the World Engineers' Summit 2013 (WES2013) in Singapore on September 9 - 15, 2013.

The new program for WECC2015, entitled “the Kyoto Program”, will shed light on the relationship between the state-of-the-art industrial city of Kyoto and its time-honored history filled with sophisticated culture. In view of this, one more session day will be added to the start of the conference to facilitate participants' understanding of Kyoto. Through this additional program, attendees will learn why this city was selected as the venue for WECC2015.

The Kyoto Program will not only invite WECC2015 participants to learn more about the elaborate culture of Kyoto, but also explain why highly innovative industries have sprung up there.

Early next year, we will announce the detailed session topics of the Technical Program.



WFEO general assembly

WFEO International Advisory Committee, 13th September 2013

Report on the preparation for WECC2015

Dr. Ayao Tsuge

President of the Japan Federation of Engineering Societies
Chair of WECC2015 Organizing Committee

1. Steps taken after September, 2012

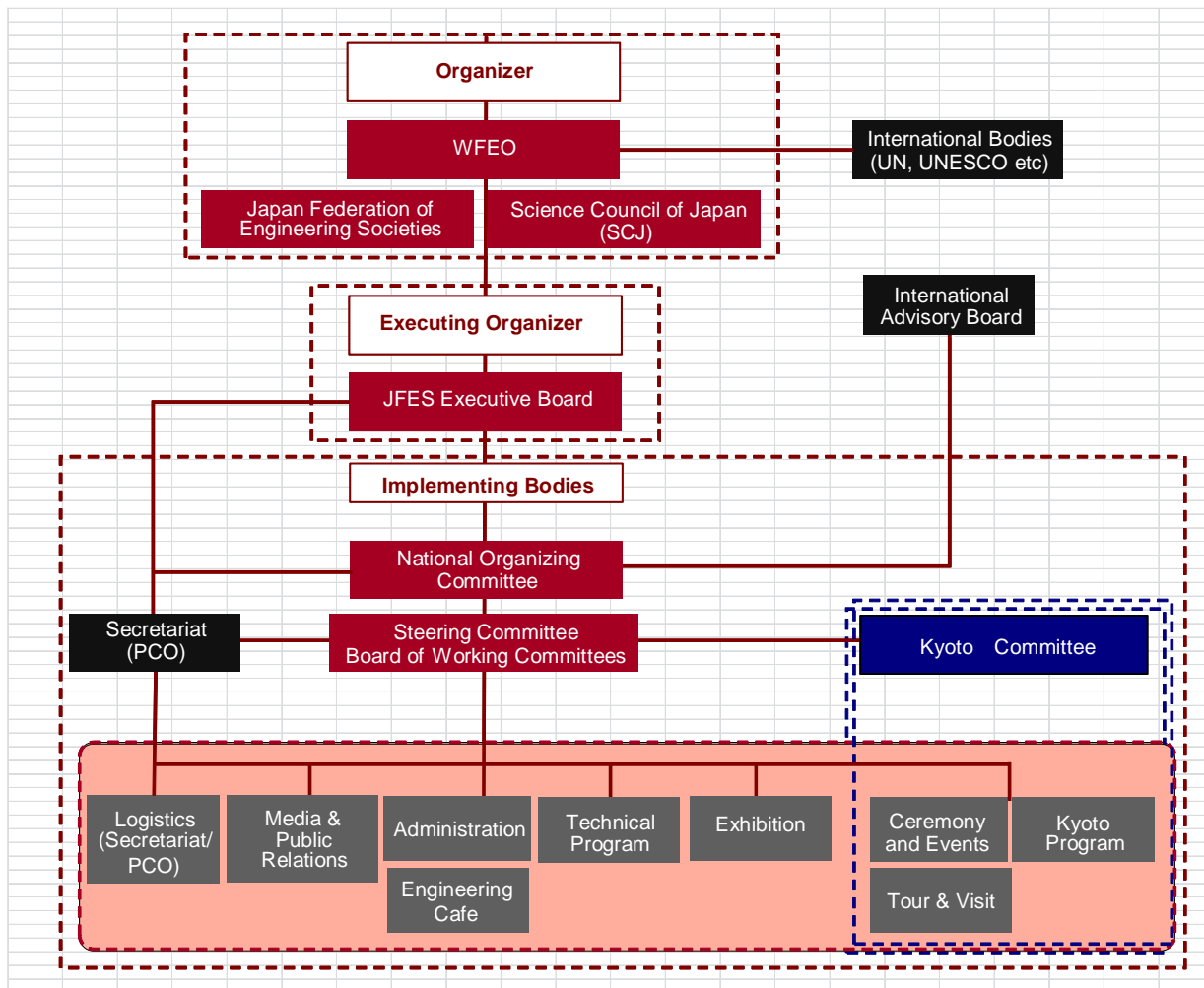
(1) Collaboration with the Science Council of Japan

The WECC2015 Organizing Committee prepared detailed draft conference plan last February to the board of the Science Council of Japan, and mutual agreement was obtained. The plan shall be submitted to the Cabinet of the government for final approval as a Cabinet Office event.

(2) Committees newly established

To promote the preparation and detailed design of WECC2015, task-force committees have been established as follows on the close support of 98 member engineering societies of JFES, major leading research funding agencies such as the Japan Science and Technology Agency (JST), New Energy and Industrial Technology Development Organization (NEDO), National Institute of Advanced Industrial Science and Technology (AIST), and key technology-based industries group: Council on Competitiveness -Nippon (COCN).

- a) Steering Committee, chaired by Dr. Yumio Ishii
- b) Board of Working Committees, chaired by Prof. Teruhiko Yoda
- c) Working Committee on Technical Program, chaired by Prof. Ken Okazaki
- d) Working Committee on Administration, chaired by Dr. Junichi Sato
- e) Working Committee on Media & Public Relations, chaired by Dr. Mari Inoki
- f) Working Committee on Technical Exhibition, chaired by Mr. Hiroki Yamazaki
- g) Working Committee on Engineering Café, chaired by Prof. Kaoru Arakawa
- h) Kyoto Committee, chaired by Prof. Eiichi Taniguchi
 - i) Working Committee on Kyoto Program, chaired by Prof. Yohei Ishikawa
 - ii) Working Committee on Ceremony & Related Events, chaired by Yuichi Komizo
 - iii) Working Committee on Technical Visit & Tour, chaired by Prof. Toichi Kimura



2. WECC2015 Vision

- (1) Engineering, and the engineers, researchers and top managements in engineering have vital social mission and responsibility to achieve innovation that links scientific and technological advances to the creation of socio-economic value.
- (2) In the 21st century, as well as generating material wealth, engineering needs to create safe and secure communities and to build sustainable societies that foster diverse cultures and promote well-being of the world.
- (3) Fulfilling the social mission of engineering in the 21st century will require us to continue making field-specific advances in science and technology, together with integrating technologies in the aim of creating increasingly large and complex socio-economic systems and generating innovation with a view to technology-based societies and the world.
- (4) Setting its sights on engineering's social mission and challenge we face in the 21st century, WECC2015 will bring together representatives of industry, academia, government, and the general public from around the world to build stronger global innovation networks that link knowledge creation to the creation of socio-economic value in broad area of the social systems.

3. Program Design

From the perspective of “Engineering for Society and Engineering in Society”, WECC2015 will focus on both “Science & Technology driven innovation” and “Engineering research & development for the innovation.”

Reflecting this approach, the overall conference theme shall be “Engineering: Innovation and Society”. Main themes are:

I. Innovation for Sustainable Growth and Socio-economic Development

Leading national research and funding organizations and industry group in innovation are organizing the following four sessions.

I-1 Innovation for a Resilient Society

- Resilient Economy
- Resilient Social Infrastructure
- Resilience-based Industries and Resilient Energy Systems
- Resilient Information-Communication Systems
- Emergency Robot-systems
- Innovative & Sustainable Maintenance Systems for Social Infrastructure

I-2 Green Innovation

- Renewable Energy and New Energy
- Energy-saving Technology and High Efficient Energy Utilization
- High Performance Batteries
- Smart Grid, Smart Community, Smart City Infrastructure
- Environmental Innovation

I-3 Life Innovation

- Medical-Engineering Collaboration for Diagnosis, Treatment, Drug Development
- Safe Living Environment and Healthy Lifestyle
- Engineering Application to Regenerative Medical Treatment

I-4 Innovation for Competitiveness

- Innovation by High Value Added Design & Production Technology
- Innovation by Big-data Revolution
- Innovation by Next Generation high performance Device
- Innovation by New Material Revolution
- Role of Financial Systems for Industrial Innovation

Note: Further examination and elaboration on the above topics is going on to meet the viewpoints of global demands and time-frame of WECC2015.

II. Engineering Research and Development for Innovation

Twenty-two engineering societies from 98 member bodies of the Japan Federation of Engineering Societies are taking initiative to organize the following sessions.

II-1 Mobility and Machinery

II-2 Information and Communication Technology

II-3 Chemicals, Materials and Resources

II-4 Energy and Environment

II-5 Urban development and Buildings

Special focus will be given to the current progress of research and development in the related engineering fields addressing the specific innovation and socio-economic value. Each organizing body will get contact with most appropriate partners in the world to make its session fruitful and informative from global viewpoint.

III. Engineering for Society and Engineering in Society

To organize this unique topic, some engineering organizations covering related disciplines and JFES's committee members have gathered. The following are the sessions to be organized.

III-1 Social Mission of Engineering and Ethics for Engineers

III-2 Social Trust on Science and Technology and Communication between Society and Engineering

III-3 Women in Engineering and Society

III-4 Human Resource Development and Engineering Education

4-1 Improvement of Engineering Education

4-2 Young Engineers Leading the Next

Note: Standing Technical Committee (STC) of WFEO is welcome to make a report of its activity at the related session of III-1~4.

The WECC2015 contact persons are:

- Dr. Kazumasa ITO, WECC2015 Steering Committee, E-mail:K-ito@ctie.co.jp
- Mr. Tsutomu NAKAJIMA, WEC2015 Secretariat, Japan Federation of Engineering Societies

Each session organizer will do the best to incorporate the proposed report into designing related session.

4. Technical Exhibition

More than 100 companies and government-affiliated organizations are expected to exhibit their cutting-edge technologies. This exhibition, different from ordinary ones, will offer various chances of contacts between conference participants and exhibitors including governmental organizations of some WFEO member countries.

5. Kyoto Program

Since WECC2015 is held in Kyoto, the time-honored city of long history and sophisticated culture and, what's more, of highly innovative industries, the following special Kyoto Program will be arranged.

- Special Lectures by Innovation Leaders from Industries and Academia
- Technical Visit to High-tech Companies and Laboratories
- Engineering Café for Enhancing Dialogue between Engineers and Citizens & Youth
- Visit to the Heart of Kyoto and Cultural Experience

6. Kyoto Protocol to be Published at WECC2015

Based on the vision and perspective obtained at the WECC2015, the Organizing Committee set up in the Japan Federation of Engineering Societies is planning to publish Kyoto Protocol in collaboration with WFEO. The key element of the proposed message will be “Engineering for Society and Engineering in Society.”

Kyoto protocol will enhance the social mission and responsibility of engineering itself and engineering education, accelerating dialogue and communication as well as collaboration between the engineers and society.

7. Total Program Structure of WECC2015 (Nov29~ Dec.3, 2015)

The total program structure of WECC2015 will be as follows incorporating the above-mentioned plan.

Note: WFEO-STCs, WFEO Executive Council, WFEO Gala Party and WFEO General Assembly will be held before and after WECC2015 Program. Some WFEO-STCs will be held in parallel with Kyoto Program on Nov.29, 2015.

	Nov 28(Sat)	Nov 29(Sun)	Nov 30(Mon)	Dec 1 (Tues)	Dec 2 (Wed)	Dec 3 (Thurs)	Dec 4 (Fri)
Main Program	WFEO-STCs	Registration WFEO-STCs	Registration Opening Ceremony & Plenary Session	Registration Parallel Sessions	Registration Parallel Sessions	Tech. Visit	WFEO Executive Council WFEO General Assembly
	WFEO-STCs	WFEO-STCs	Kyoto Program Parallel Sessions	Parallel Sessions	Parallel Sessions & Closing Ceremony		WFEO Executive Council WFEO General Assembly
		Get-together	Kyoto Program: Evening Special Lecture	Banquet			WFEO Gala Party

Technical Exhibition	(Booth Setup)	Exhibition
Social events		Introduction of Traditional Arts and Technology
		Visit to Heart of Kyoto and Sightseeing Tour
	Engineering Café	

8. Financial Plan for WECC2015

Revenue		Expenditure	
<u>Item</u>	<u>Amount</u>	<u>Item</u>	<u>Amount</u>
	(thousand yen)		(thousand yen)
1.Registration fee	132,600	1.Preparation	56,232
2.Exhibition fee	24,000	2.Conference Operation	54,095
3.Grants/Contribution	41,000	3.Session Room & Equipment	52,000
4.Miscellaneous	2,400	4.Miscellaneous	37,673
Total	200,000	Total	200,000
		(US\$2,000,000: 1,540,000Euro)	

Expected registrants: 1,500 (not including invited participants)

Registration fee (thousand yen):

Pre-registration 80 (Student 10)

On-site Registration 100 (Student 20)

9. Publicity promotion

(1) WECC2015 New Website is now open. Visit: <http://www.congre.co.jp/wecc2015/>



(2) We will make use of every media vehicles: Mailing list, Twitter, Facebook---you name it.

10. Schedule of Key Meetings

1. 2nd meeting of Steering Committee Early October, 2013
2. 2nd meeting of Organizing Committee Late October, 2013
3. Report to WFEO Executive Board at UNESCO headquarters March 2014
4. Report to WFEO Executive Council, International Advisory Board To be held in Nigeria September, 2014
5. Report to WFEO Executive Board at UNESCO Headquarters March, 2015
6. WECC2015 Kyoto November, 2015
7. WECC2015 Final Report to WFEO Executive Board at UNESCO Headquarters March, 2016

11. Dates to be noted

1. Nomination of keynote speakers January, 2014
2. Announcement of Call for Papers for Specific Session January, 2014
3. Deadline for submission of abstract of particular topic July, 2014
4. Notification of paper acceptance November, 2014
5. Advance Program to be issued November, 2014
6. Deadline for camera-ready paper May, 2015
7. WECC2015 opens November 29, 2015

12. Contact List

1. Liaison to WFEO (Council, Board)

Dr. Kazumasa ITO, WECC2015 Steering Committee

k-ito@ctie.co.jp

2. Liaison to WFEO Standing Technical Committee

Dr. Kazumasa ITO, WECC2015 Steering Committee

k-ito@ctie.co.jp

Mr. Tsutomu Nakajima

nakajima@jfes.or.jp

Secretariat of the Japan Federation of Engineering Societies

3. Contact for Sessions to be planned by the International Organizations

k-ito@ctie.co.jp